

低倍数泡沫枪

BRANCHPIPES - LOW EXPANSION FOAM

- ▶ 最大工作压力: PN16 / Working pressure: PN16
- ▶ 流量: 200 或 400 升/分 @ 5 公斤 / Flow rate: 200 or 400 lpm @ 5 bar
- ▶ 材料: 铝合金 / Material: aluminium alloy
- ▶ 表面处理: 聚酯涂层和硬质阳极氧化
Surface treatment: polyester coating and hard anodisation
- ▶ 阀门类型: 球阀 / Valve type: ball-valve
- ▶ 开关方式: 通过手柄 / Operation: by manoeuvre handle
- ▶ 发泡倍数: x10 / Expansion: approx. x10



低倍数中倍数联用泡沫枪

HAND NOZZLES - DUAL EXPANSION FOAM

- ▶ 最大工作压力: PN16 / Working pressure: PN16
- ▶ 流量: 200 或 400 升/分 @ 5 公斤 / Flow rate: 200 or 400 lpm @ 5 bar
- ▶ 材料: 铝合金 / Material: aluminium alloy
- ▶ 表面处理: 聚酯涂层和硬质阳极氧化
Surface treatment: polyester coating and hard anodisation
- ▶ 阀门类型: 球阀 / Valve type: ball-valve
- ▶ 开关方式: 通过手柄 / Operation: by manoeuvre handle
- ▶ 发泡倍数: x10 或 x70 / Expansion: approx. x10 or x70



泡沫比例混合器 «MIXY»

"MIXY" EDUCTORS

- ▶ 最大工作压力: PN16 / Working pressure: PN16
- ▶ 流量: 200 或 400 升/分 @ 10 公斤 / Flow rate: 200 or 400 lpm @ 10 bar
- ▶ 材料: 铝合金 / Material: aluminium alloy
- ▶ 表面处理: 聚酯涂层 / Surface treatment: polyester coating
- ▶ 配吸液软管 / Supplied with pick-up tube
- ▶ 止回阀 / Non-return valve
- ▶ 调节阀 / Control valve



接口*

COUPLINGS*

*根据客户需求可配备不同型号接口。
*Products can be equipped with other types of couplings if needed



PLA_01141_Flyer CH-EN_煤矿_Mines



POK CHINA

博克消防装备科技有限公司

地址: 北京市顺义区南彩镇彩达三街一号茂华工场5号厂房2层201室 · POK

电话: 010 64667868

邮箱: info@pokchina.com sales@pokchina.com

www.pokchina.com





ANTENOR 拖车炮 TOWABLE ANTENOR MONITOR

- 拖车炮 / mobile units
- ▶ 牵引手柄 / Pull handle
 - ▶ 2 套水带舱 水带 Ø 65 - 长 20 米
2 housing for 20 meters fire hoses PIL Ø 70
 - ▶ 4 镀锌金属地面支撑 / 4 galvanized steel spikes
 - ▶ «Klap Klap» 五腿折叠支架, 支撑消防炮
Bracket "Klapklap" to maintain the monitor
 - ▶ 选配: 2 个长度 20 米 消防水带 Ø 65
Option: 2 lengths of 20 meters hoses PIL Ø 70

- Antenor 消防炮 / Monitor nozzle antenor
- ▶ 最大工作压力: PN16 / Working pressure: PN16
 - ▶ 流量: 3000 升/分 / Flow rate: 3000 lpm
 - ▶ 材料: 铝合金 / Material: aluminium alloy

排水抽吸泵 TURBO-POMPE TURBO-PUMP

排水抽吸泵是将液体从一个地方抽吸到另一个地方。水压驱动内部涡轮旋转, 同时驱动外部叶轮旋转, 产生吸力将污水抽走。

驱动涡轮旋转的水与污水分离不在同一腔内, 清洁可重复循环使用。适用于灭火后污水清理。

The turbo-pump is used to transfer water from one location to another. By supplying pressurized water at the inlet, the turbine rotates and drives the wheel simultaneously. The water is sucked by the wheel and discharged. The intent is to separate the suctioned polluted liquid from the water used to drive the pump.

▶ 流量: 108 立方米/小时 / Flow rate: 108 m³/h

大流量液压泵水器 带止回阀 HYDRO-EJECTORS FOR LARGE FLOWRATES

大流量液压泵水器根据文丘里原理工作。压力下聚合管和分离管道中的水道形成负压, 从而吸入带抽吸液体。安装在设备底部的止回阀, 可避免水流倒灌。直径6mm的过滤网筐, 可以防止吸入砂砾或杂物。使用后提拉清洗泄流环可以排出残水。多个用于悬挂设备的缆绳耳柄可保证其安全。既定时间内的排泄水量取决于:

- 设备输入口处的工作压力,
- 排水液面高度 (抽吸液面与排水管出口之间的水位差)。

The hydro ejectors are designed to evacuate or supply water via the ventury effect. The portion of the pressurized water in the converging and diverging pipes creates a vacuum that causes the suction of the liquid to be discharged. A non-return valve, mounted at the base of the apparatus prevents priming. A filter screen of 6 mm prevents the suction of impurities or pebbles. A flush with a ring allows the drain at a distance of the column after use. Several holes allow the attachment of the device with a rope to ensure safety. The amount of water that is available to evacuate in a given period of time depends on:

- motive water pressure at the inlet of the device
- the geometric height of discharge (difference of the level between the water to be evacuated and the outlet of the discharge pipe).

▶ 出口接口: Storz A/110, Storz C/52 / Outlets: Storz A/110, Storz C/52

移动式泡沫推车 100/150 升 MOBILE FOAM UNITS 100 / 150 LITERS

- ▶ 流量: 200 或 400 升/分 / Flow rate: 200 or 400 lpm
- ▶ 最大工作压力: PN16 / Working pressure: PN16
- ▶ 材料: 铝合金和聚乙烯
Material: aluminium alloy and polyethylene
- ▶ 吸液百分比: 0, 1, 2, 3, 4, 5 和 6%
Suction percentage: 0, 1, 2, 3, 4, 5 and 6%
- ▶ 止回阀 / Non-return valve
- ▶ 调节阀 / Control valve
- ▶ 表面处理: 聚酯涂层和硬质阳极氧化
Surface treatment: polyester coating and hard anodisation
- ▶ 发泡倍数: x10 或 x70 / Expansion: approx. x10 or x70
- ▶ 配吸液软管 / Supplied with pick-up tube

消防炮和炮管 MONITORS AND BRANCHPIPIPES

- ▶ 入口接口: 法兰或标准接口
Inlet coupling: flanges or standard couplings
- ▶ 最大工作压力: PN16 / Working pressure: PN16
- ▶ 流量: 750 升/分到 30000 升/分
Flow rate: from 750 lpm to 30000 lpm
- ▶ 标准直径: 40 mm 到 200 mm
Nominal diameter: from 40 mm to 200 mm
- ▶ 材料: 铝合金, 不锈钢 或 青铜
Material: aluminium alloy, stainless steel or bronze
- ▶ 垂直仰俯和水平旋转调节方式: 手动或电动
Vertical and horizontal movements: manual or motorised
- ▶ 发泡倍数: x10
Expansion: approx. x10



拖车 TOWABLE MONITORS

- ▶ 材料: 铝合金和钢
Material: aluminium alloy and steel
- ▶ 车轮尺寸: 145 70 R13
Wheels dimensions: 145 70 R13
- ▶ 可折叠 jockey 车轮
Retractable "Jockey" wheel
- ▶ 信号标志: 标准交通标志 / Road signaling: traffic signal
- ▶ 选配: 消防炮, 出口装备, 入口尺寸和数量
Options: monitor, outlet equipment, dimensions, number of inlets
- ▶ 支脚承重: 4x 200kg / Stands: 4x 200kg

- ▶ 带储液罐 / With tank
- ▶ 储液罐材料: 聚酯 / Tanks material: polyethylene
- ▶ 容量: 150 到 200 升 / Capacity: 150 L

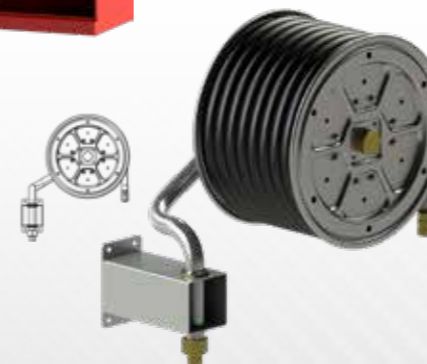


消防卷盘储藏柜 STORAGE CABINET FOR HOSE REEL



不锈钢消防卷盘 HOSE REELS IN STAINLESS STEEL

- ▶ 最大工作压力: 12 公斤 / Maximum working pressure: 12 bar
- ▶ 软管: Ø 25 / Hose: Ø 25
- ▶ 软管长度: 30 米 / Hose capacity: 30 meters
- ▶ 选配: 固定支架 / Option: fixed support



泡沫发生罐 FOAM CHAMBERS

- ▶ 流量: 300 到 3000 升/分
Flow rate: from 300 to 3000 lpm
- ▶ 最大工作压力: PN16
Working pressure: PN16
- ▶ 材料: 不锈钢
Material: stainless steel

